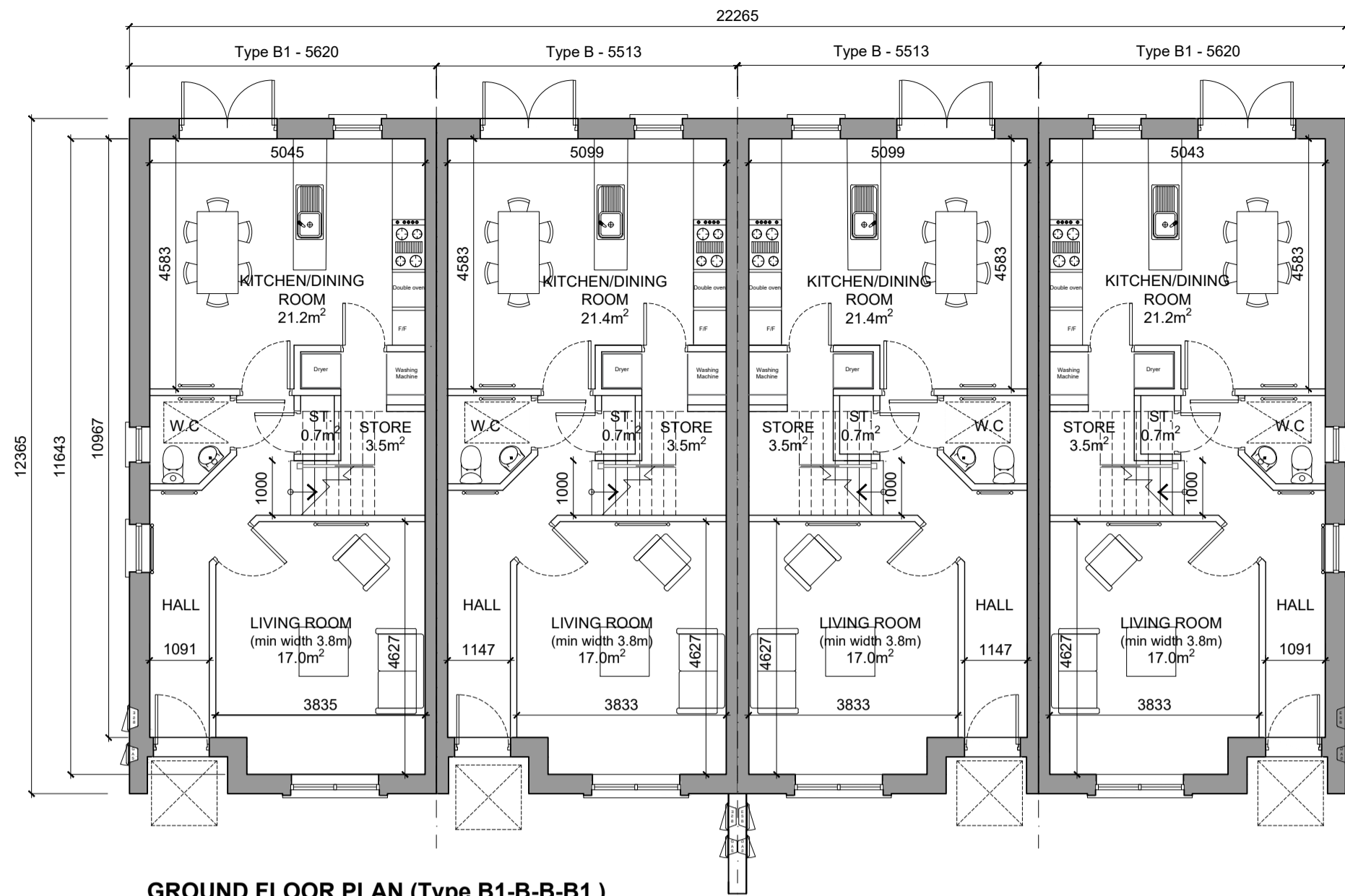
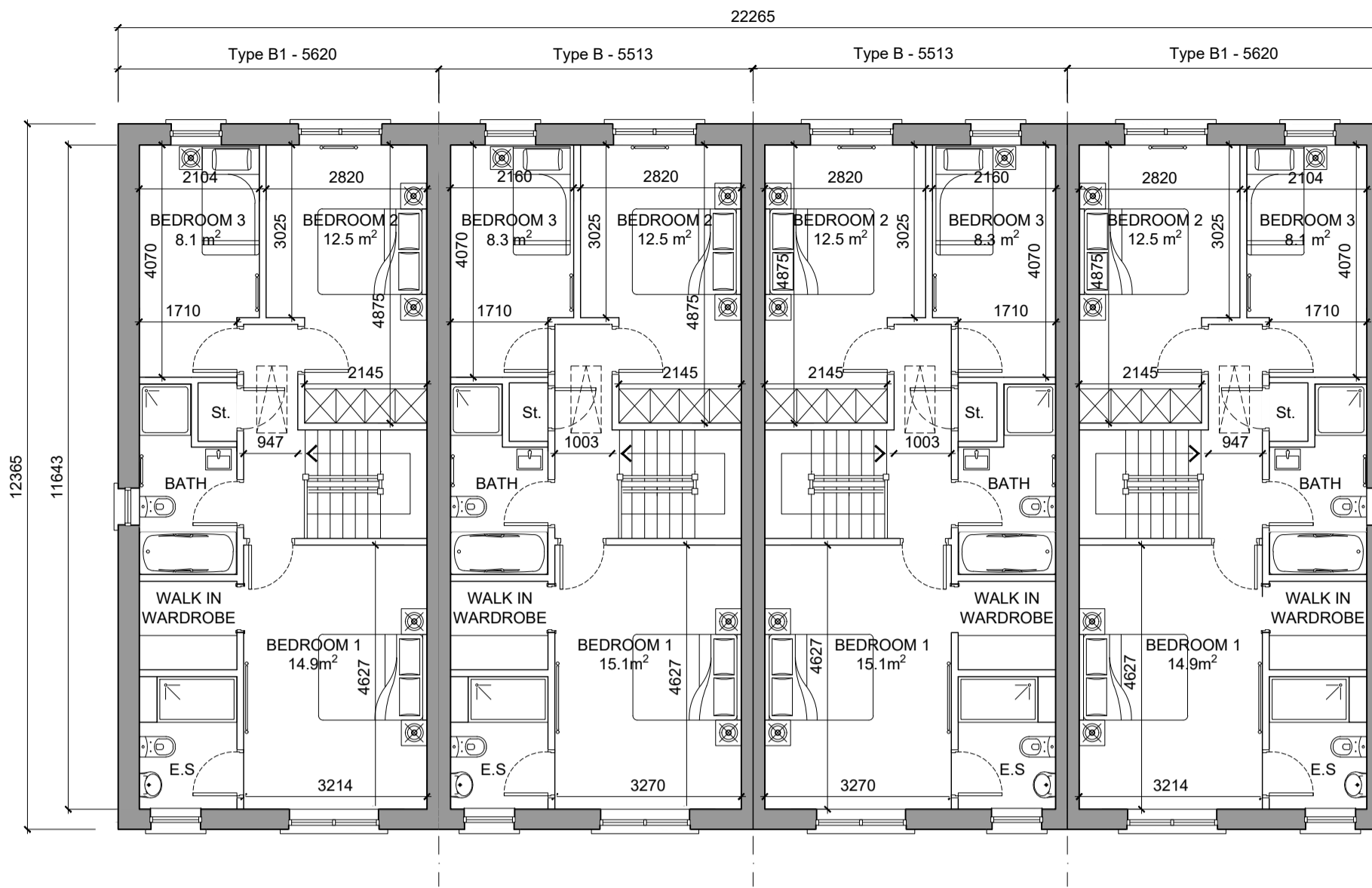


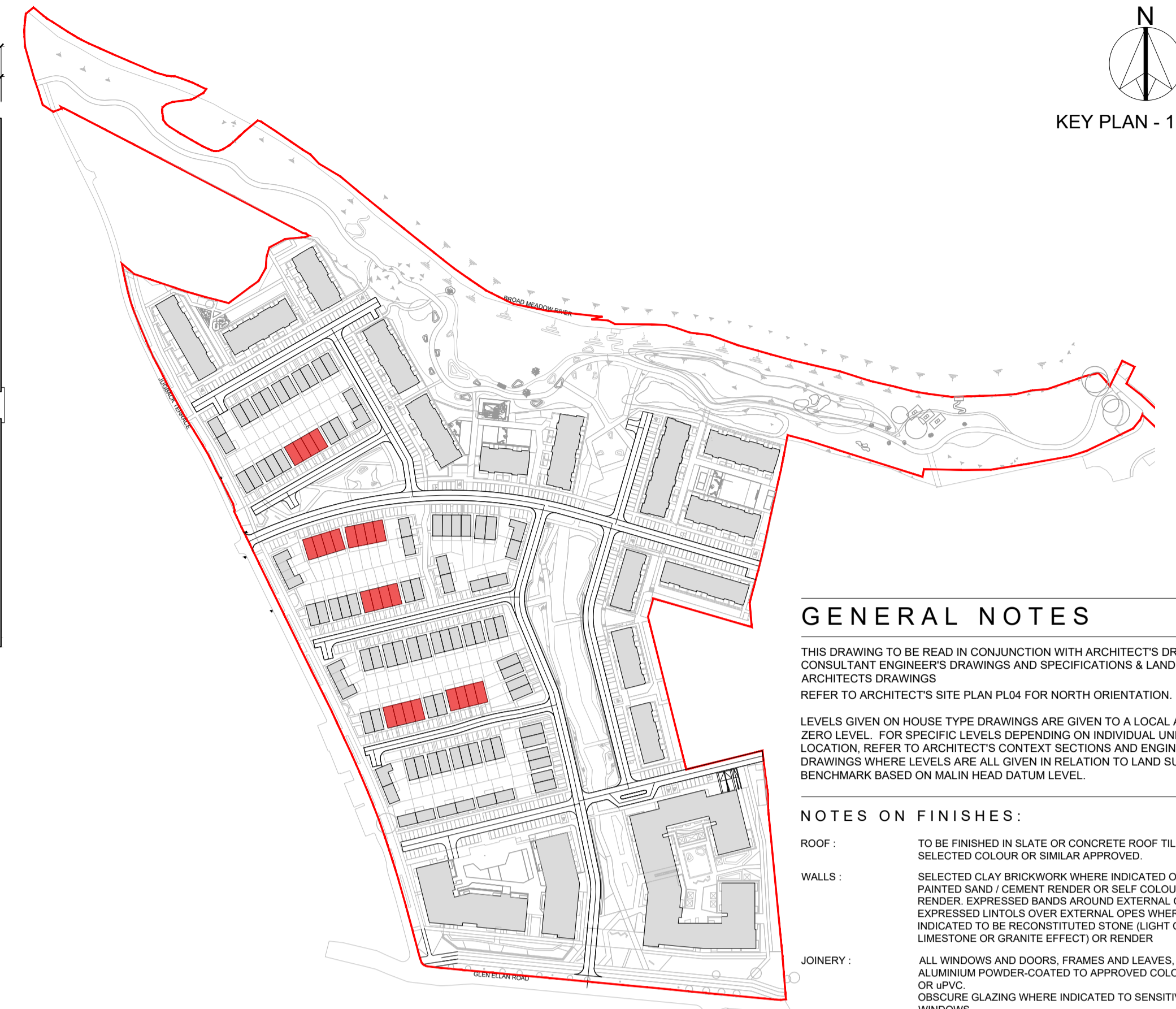
KEY PLAN - 1:2500



GROUND FLOOR PLAN (Type B1-B-B1) Scale 1:100 Area Type B1 = 57.5m² (OA 116.2m²) Area Type B = 58.1m² (OA 117.4m²)



FIRST FLOOR PLAN (Type B1-B-B1) Scale 1:100 Area Type B1 = 58.7m² (OA 116.2m²) Area Type B = 59.3m² (OA 117.4m²)

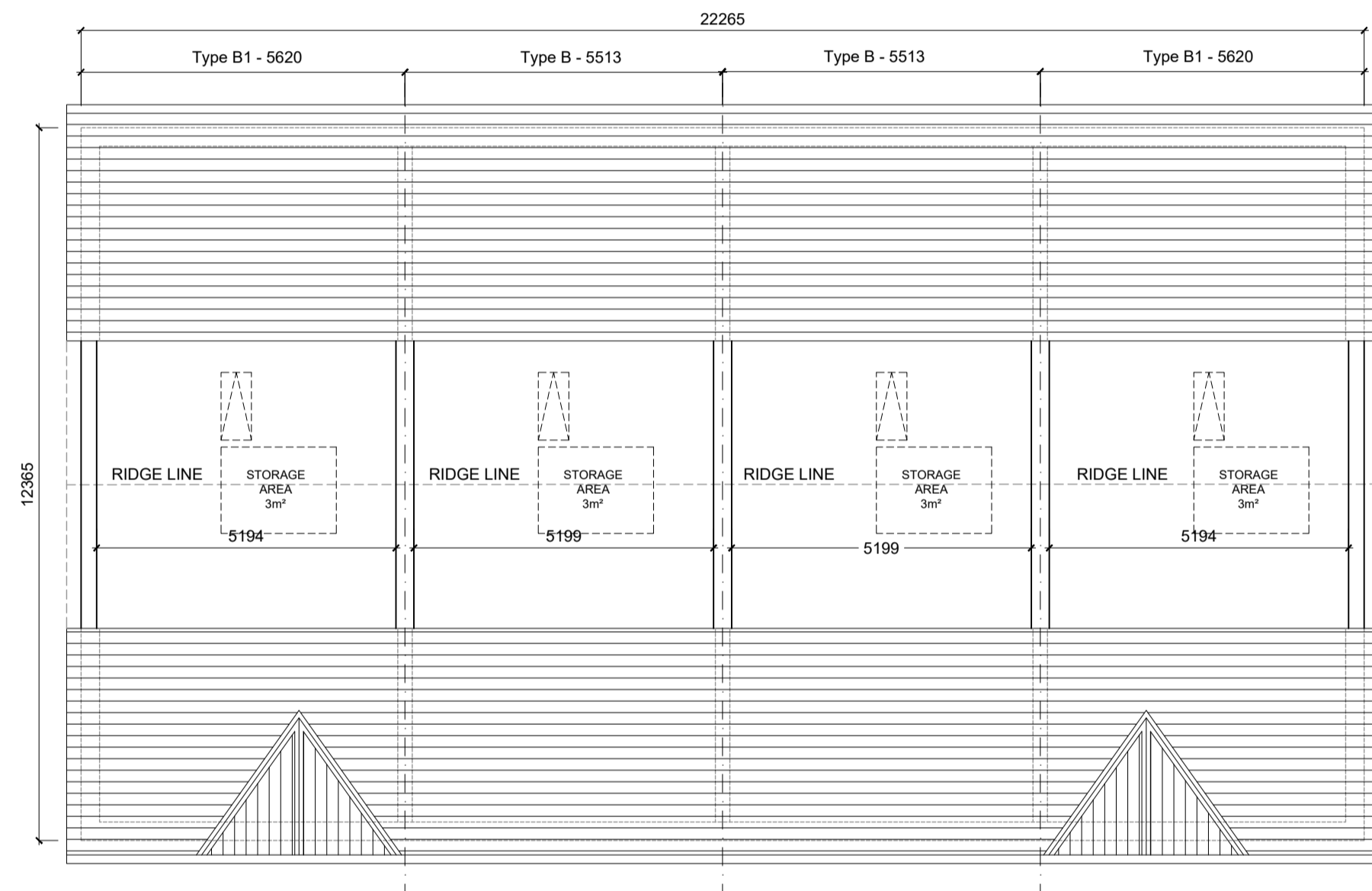


GENERAL NOTES

THIS DRAWING TO BE READ IN CONJUNCTION WITH ARCHITECT'S DRAWINGS, CONSULTANT ENGINEER'S DRAWINGS AND SPECIFICATIONS & LANDSCAPE ARCHITECT'S DRAWINGS. REFER TO ARCHITECT'S SITE PLAN PL04 FOR NORTH ORIENTATION. LEVELS GIVEN ON HOUSE TYPE DRAWINGS ARE GIVEN TO A LOCAL ABSOLUTE ZERO LEVEL. FOR SPECIFIC LEVELS DEPENDING ON INDIVIDUAL UNIT LOCATION, REFER TO ARCHITECT'S CONTEXT SECTIONS AND ENGINEER'S DRAWINGS WHERE LEVELS ARE ALL GIVEN IN RELATION TO LAND SURVEYOR'S BENCHMARK BASED ON MALIN HEAD DATUM LEVEL.

NOTES ON FINISHES:

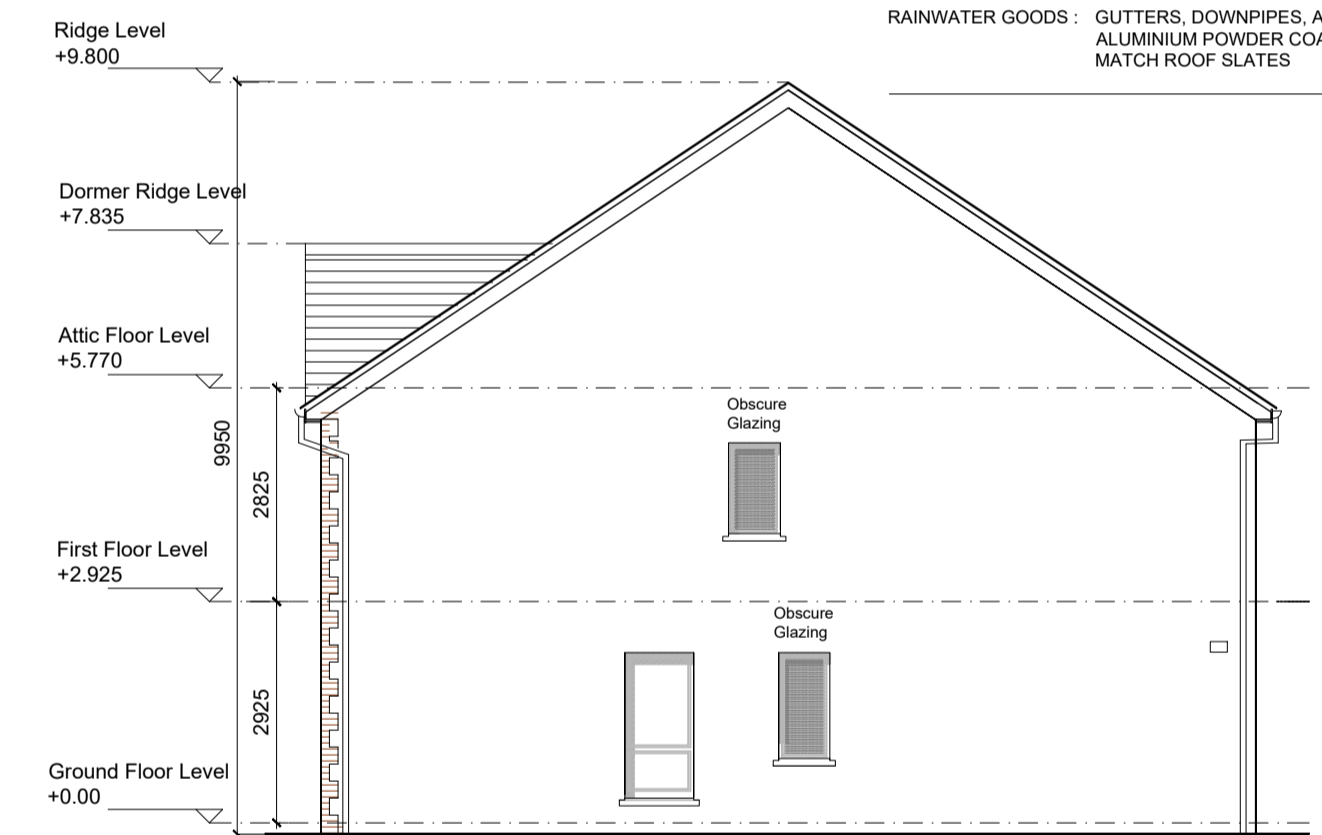
- ROOF: TO BE FINISHED IN SLATE OR CONCRETE ROOF TILES IN SELECTED COLOUR OR SIMILAR APPROVED.
WALLS: SELECTED CLAY BRICKWORK WHERE INDICATED OTHERWISE PAINTED SAND / CEMENT RENDER OR SELF COLOURED RENDER EXPRESSED BANDS AROUND EXTERNAL OPES/ EXPRESSED LINTOLS OVER EXTERNAL OPES WHERE INDICATED TO BE RECONSTITUTED STONE (LIGHT CREAM LIMESTONE OR GRANITE EFFECT) OR RENDER
JOINERY: ALL WINDOWS AND DOORS, FRAMES AND LEAVES, TO BE ALUMINIUM POWDER-COATED TO APPROVED COLOUR OR UPVC. OBSCURE GLAZING WHERE INDICATED TO SENSITIVE WINDOWS.
RAINWATER GOODS: GUTTERS, DOWNPIPES, AND FIXINGS TO BE UPVC OR ALUMINIUM POWDER COATED TO SELECTED COLOUR TO MATCH ROOF SLATES



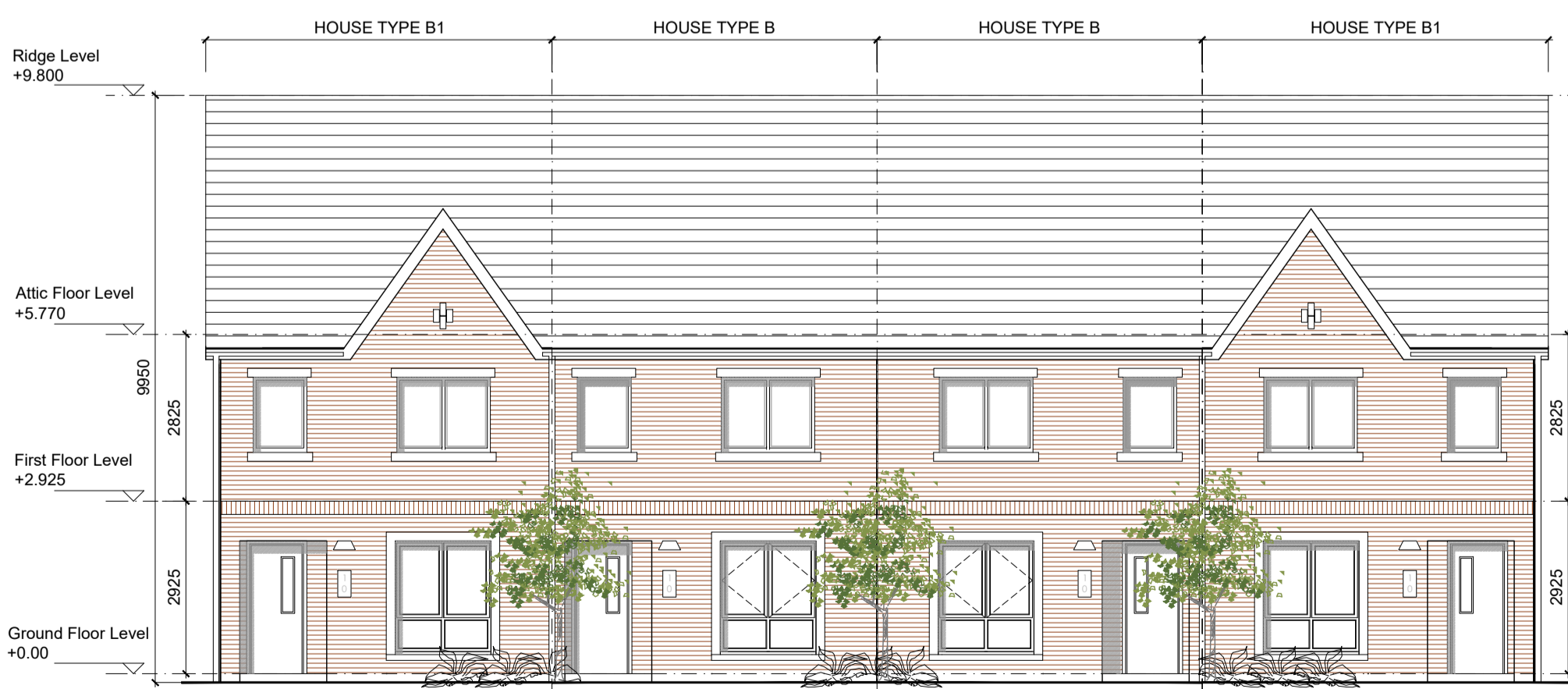
ATTIC PLAN (Type B1-B-B1) Scale 1:200 minimum 1.0 m² of usable floor area per unit as indicated



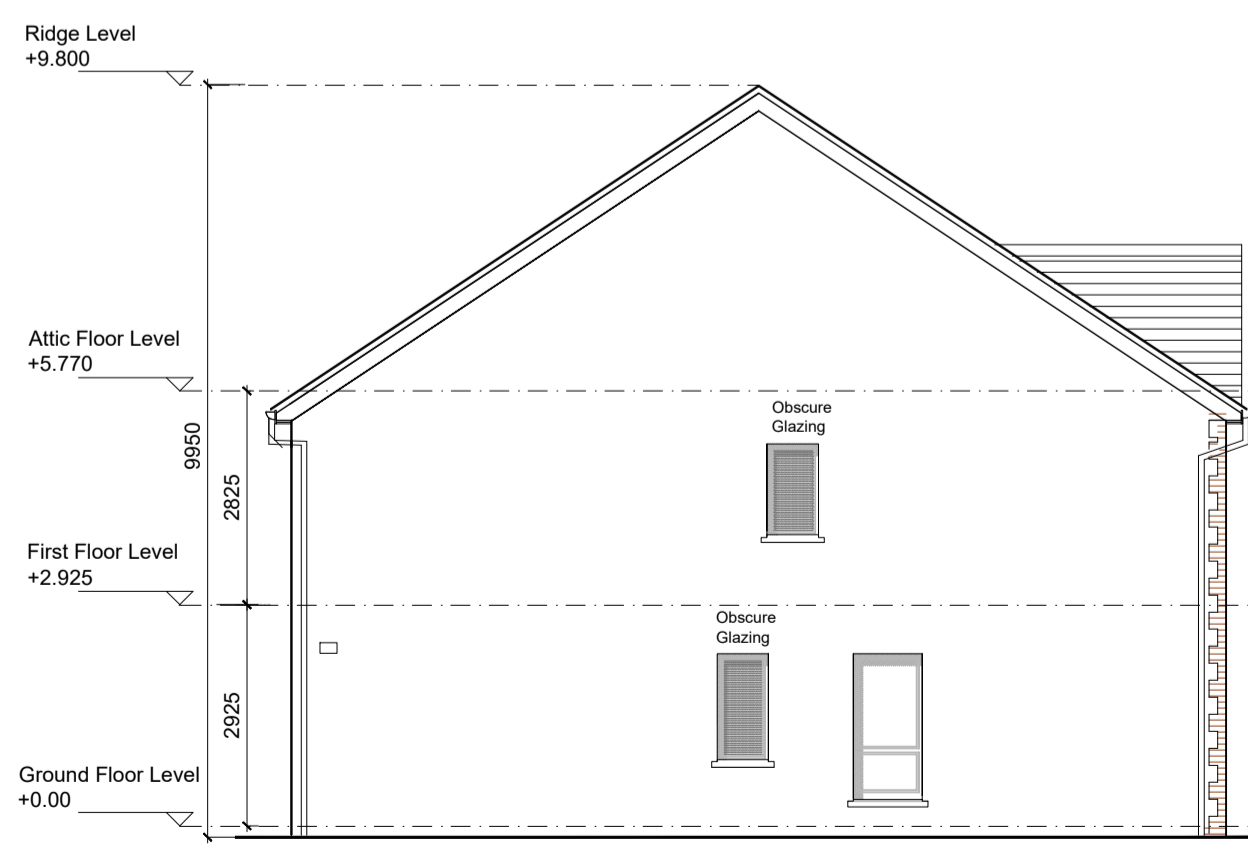
REAR ELEVATION (Type B1-B-B1)



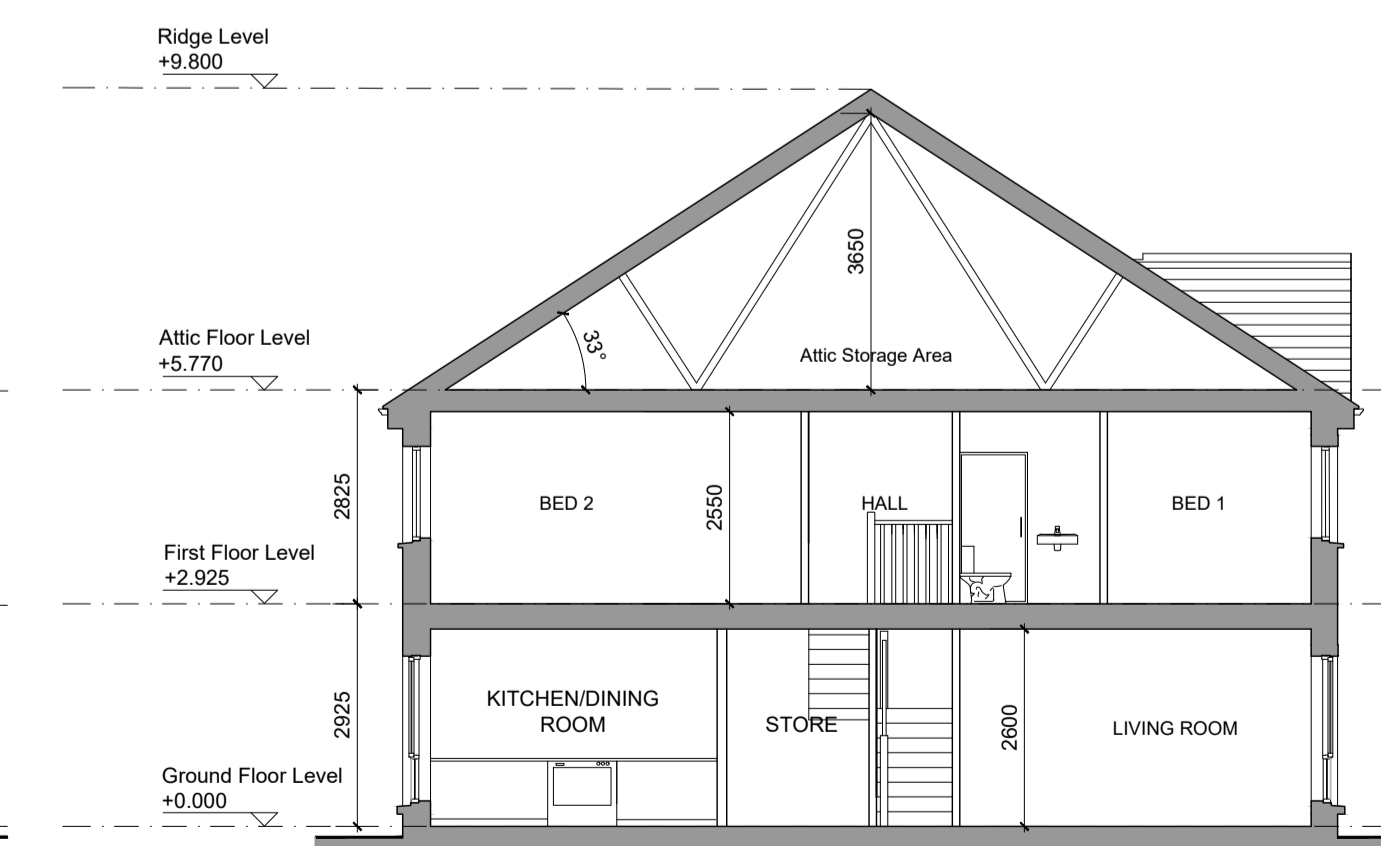
SIDE ELEVATION - Right Handed Entry (Type B1)



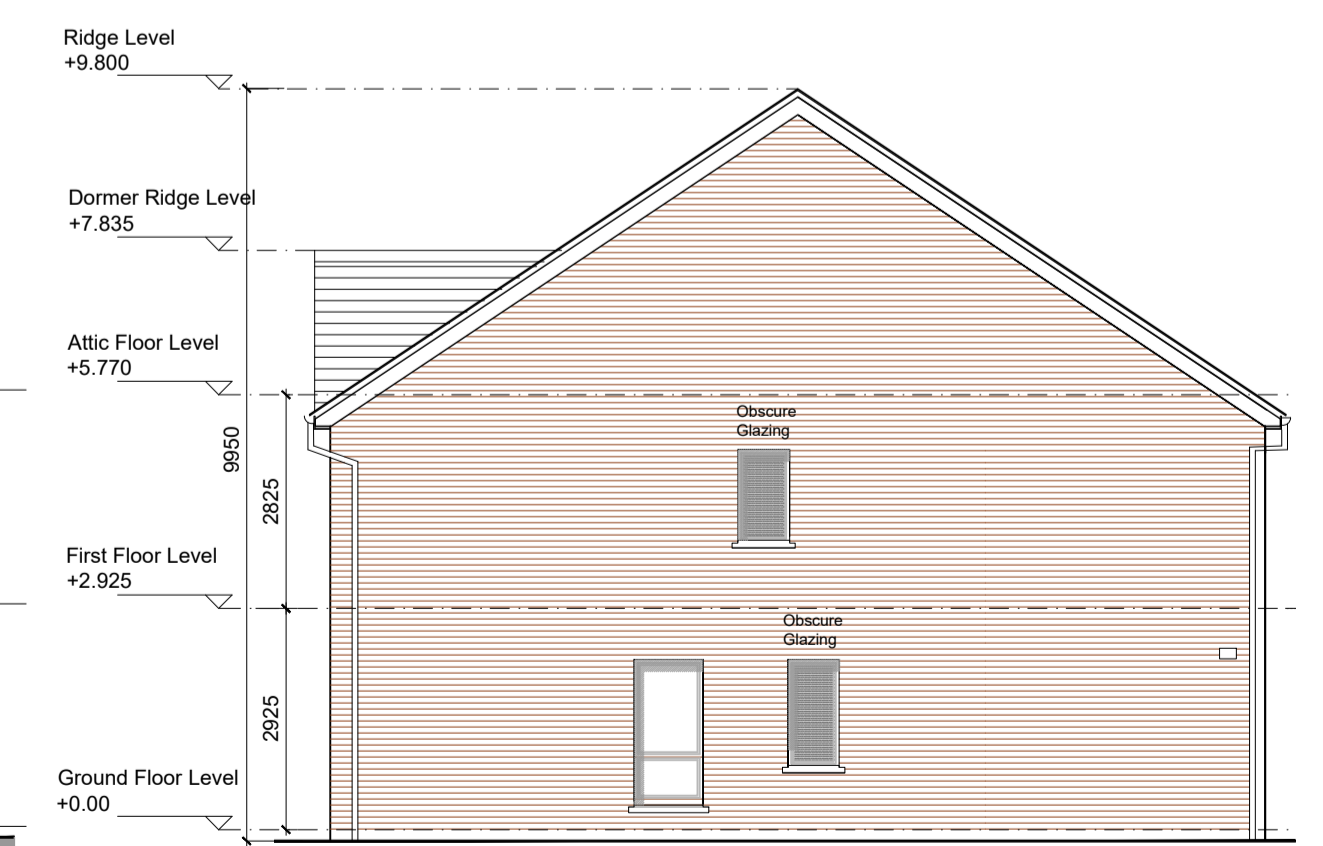
FRONT ELEVATION (Type B1-B-B1)



SIDE ELEVATION - Left Handed Entry (Type B1)



SECTION AA (Type B)



SIDE ELEVATION - Units n.89 (Type B1)

NOTES:

DO NOT SCALE FROM DRAWINGS. WORK TO FIGURED DIMENSIONS ONLY. ARCHITECT TO BE NOTIFIED OF ALL DISCREPANCIES.

Table with 3 columns: B, HOUSE TYPE B 2 STOREY 3 BED, Mid-terrace 117.4 SQM / 1264 SQF

Table with 3 columns: B1, HOUSE TYPE B1 2 STOREY 3 BED, End-terrace 116.2 SQM / 1251 SQF

Table with columns: CLIENT (CAIRN), REVISIONS (DATE, DESCRIPTION, No.), PROJECT TITLE, DRAWING TITLE, SCALE, DATE, DRAWN BY, JOB NO, REVISION, DRAWING NO.

Table with columns: PROJECT TITLE (SHD AT HOLYBANKS, SWORDS), DRAWING TITLE (HOUSE TYPE B1-B-B1 Plans, Section & Elevations), SCALE (1:100 @A1), DATE (Mar'22), DRAWN BY (IDF), JOB NO (19022), REVISION, DRAWING NO (PL10).